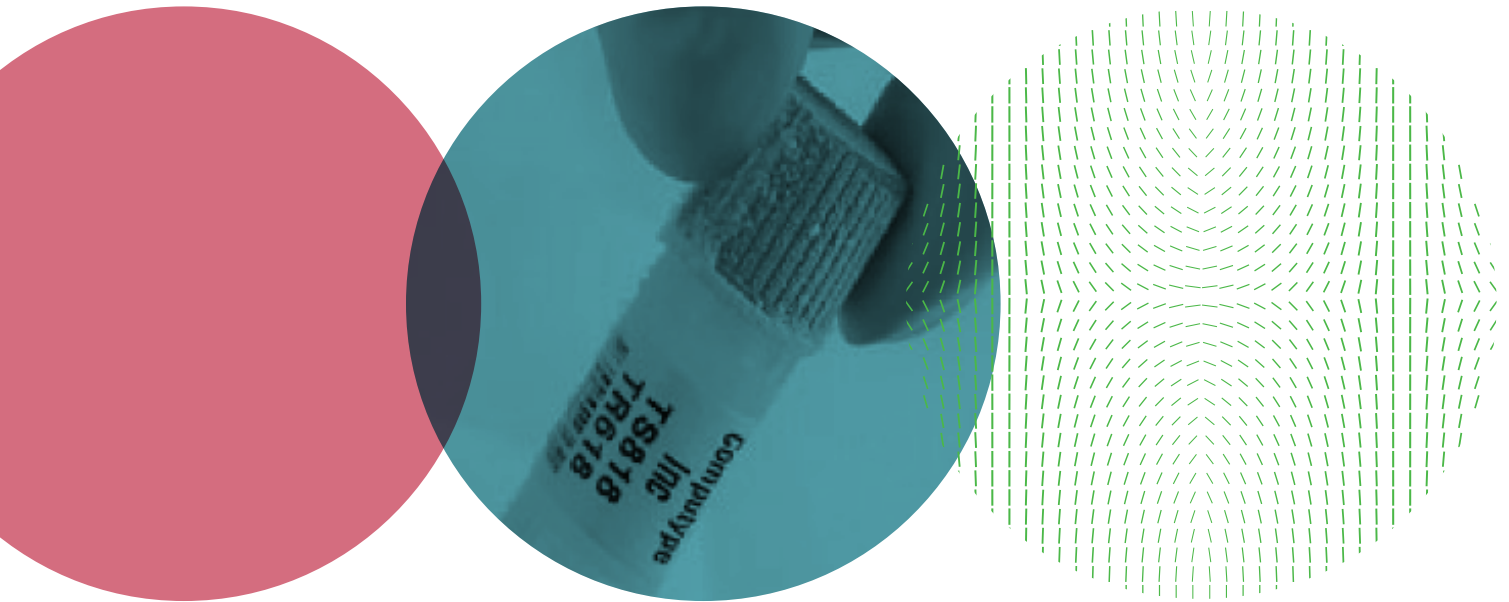


A BROCHURE

Standard Laboratory Labeling Products Guide



COMPUTYPE

Contents

Who is Computype?	3
Why Print On-Demand?	3
What are You Labeling?	4
Tubes and Vials	5
Microwell Plates	8
Slides	9
Our Top Printer Picks	10
Label Automation Options	11
Tube & Vial	11
Microwell Plates	13
RFID & Barcode Software	15
Not What You're Looking For?	16
Contact Us	17



WHO IS COMPUTYPE?

We believe in building smarter solutions for smarter business. That's why we engineer labeling solutions that ensure accuracy and safety while reducing waste in all forms, then tailor them to the unique needs of our customers.

Over several decades working with customers in the healthcare industry, we have developed an understanding of our customer's challenges and needs. Our engineers and business partners work together to build start-to-finish labeling solutions, both custom and off the shelf, to address those challenges and needs.

This guide will cover our standard line of labeling solutions for our customers in need of an on-demand printing and labeling solution. Within our standard line, a range of labels, printers and automation options are available to assist in optimizing efficiency and integrity.

WHY PRINT ON DEMAND?

Every facility does things a little bit differently— that's why we offer a range of printing and application methods to our customers. So why print on-demand?

If your facility is working with items that require time sensitive or patient related information to be noted on the label, print on-demand is going to be the only solution for you. In these situations a print on-demand system allows you to print what you need when you need it, so labels can be printed as information becomes available.

In addition to being able to print time sensitive information, printing only as needed has the added bonus of reducing waste. When you don't have a stockpile of pre-printed barcodes in storage, you can accommodate sudden changes without tossing labels in the trash.

Lastly, an on-demand strategy brings increased control to your labeling strategy. With print on-demand you can decide when and how to implement changes.



What are You Labeling?

WHAT ARE YOU LABELING?

Our range of labels was designed with purpose in mind—when it comes to healthcare that means ensuring lasting integrity through your processes no matter what you are labeling or what exposures your samples will face.

		CHEMICAL RESISTANCE						TEMPERATURE RESISTANCE						
		DMSO	Methanol	Acetone	Isopropyl Alcohol	Xylene	Staining	Autoclave 122 C	Incubator 40 C	Refrigerator 4 C	Freezer -20 C	Deep Freeze -80 C	Vapor Phase -120 C	Liquid Nitrogen -196 C
MATERIALS	TYPICAL APPLICATION													
POLYPROPYLENE														
TS818	Plastic and glass vials and tubes	•	•	•	•			•	•	•	•	•	•	•
TS864	Plastic and glass vials and tubes and slides	•	•	•	•			•	•	•	•	•		
TS839P	Microwell Plates	•	•	•	•			•	•	•	•	•		
POLYESTER														
TS955	Glass slides	•	•	•	•	•		•	•	•	•	•		
TS526	Glass slides	•	•	•	•	•	•	•	•	•	•	•		
POLYETHYLENE														
TS976	Plastic and glass vials and tubes and slides	•	•	•	•			•	•	•	•	•	•	

YOU SHOULD KNOW

Need something you don't see? Or have an idea that would really help your lab run more efficiently? Let us know. Most of what you'll see in this catalog started as a customer brainstorm!



What are You Labeling?

TS818 CRYOHOLD LIQUID NITROGEN LABELS

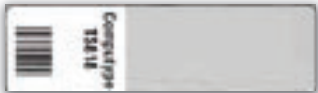
For Glass and Plastic Tubes and Vials exposed to -196°C

- TS818 polypropylene; adheres to frozen glass (wipe off frost before applying)
- Self-adheres and completely wraps around tubes ranging in size from 0.5 ml to 50 ml
- Withstands both direct and vapor liquid nitrogen exposure and an autoclave
- Resistant to solvents such as DMSO, methanol, isopropyl alcohol, etc.

TS818 KIT P/N	LABEL SIZE	IMAGE SIZE	PRINTER TYPE	LABELS/ROLL
1020386-1	0.5" x 1.8"	0.5" x 0.75"	Desktop	1,400
1020386	0.5" x 1.8"	0.5" x 0.75"	Industrial / High-Performance	3,000
1020388-1	0.68" x 2.5"	0.68" x 1.0"	Desktop	1,000
1020388	0.68" x 2.5"	0.68" x 1.0"	Industrial / High-Performance	2,000
1020390-1	1" x 2.625"	1.0" x 1.0"	Desktop	950
1020390	1" x 2.625"	1.0" x 1.0"	Industrial / High-Performance	2,000
15298937	1" x 2.28"	1.0" x 1.0"	Industrial / High-Performance	2,400



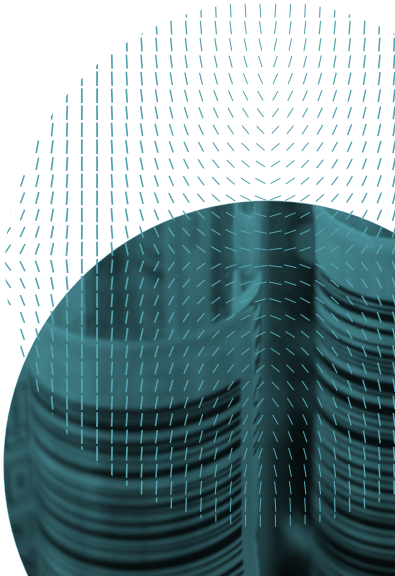
BLANK



PRINTED



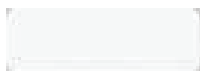
APPLIED



TS864 + TS976 CRYOHOLD FREEZER LABELS

For Tubes and Vials Exposed to -120°C

- TS864 polypropylene or TS976 polyethylene
- Resistant to solvents such as DMSO, methanol, isopropyl alcohol, etc.
- Accommodates containers ranging in size from 0.5ml to 50ml



BLANK



PRINTED



APPLIED

TS864 KIT P/N	LABEL SIZE	PRINTER TYPE	LABELS/ROLL
1013646	0.75" x 0.5"	Industrial / High-Performance	9,400
1004938-1	1" x 0.5"	Desktop	4,400
1020270-1	1.5" x 0.75"	Desktop	2,500
1020270	1.5" x 0.75"	Industrial / High-Performance	6,700
1004939-1	2" x 1"	Desktop	2,500
1004939	2" x 1"	Industrial / High-Performance	5,225
TS976 KIT P/N	LABEL SIZE	PRINTER TYPE	LABELS/ROLL
1059063	1" x 0.5"	Industrial / High-Performance*	9,400
1059064	1" x 0.5"	Desktop	4,300
1059065	1" x 1"	Industrial / High-Performance*	5,225
1059066	1" x 1"	Desktop	2,425
1059067	1.5" x .75"	Industrial / High-Performance*	6,725
1059068	1.5" x .75"	Desktop	3,110
1059069	2" x 1"	Industrial / High-Performance*	5,225
1059070	2" x 1"	Desktop	2,425

“*” indicates compatibility with the cab Axon 2 automated tube and vial labeler

TS864 CRYO HOLD FREEZER BULLET LABELS

For Microcentrifuge Tubes Exposed to -80°C

- TS864 polypropylene
- Resistant to solvents such as DMSO, methanol, isopropyl alcohol, etc.
- “Bullet” shape accommodates conical centrifuge tubes from 1.5ml to 2.0ml in size
- 1005234-1 & 1005234 Include both tube and cap labels

TS864 KIT P/N	LABEL SIZE	PRINTER TYPE	LABELS/ROLL
1004791	1.2" x1.5"	Industrial / High-Performance	3,475
1005234-1	1.2" x1.5"	Desktop	1,700
1005234	1.2" x1.5"	Industrial / High-Performance	3,400



BLANK



PRINTED



APPLIED

TS839P MICROWELL PLATE LABELS

Suitable for Automatic Application

- TS839P polypropylene
- Holds up to -80° C freeze/thaw cycles and an autoclave
- Resistant to solvents such as DMSO, methanol, isopropyl alcohol, etc.
- Custom version also available with paper liner

TS839P KIT P/N	LABEL SIZE	PRINTER TYPE	LABELS/ROLL
1004567-1	2" x 0.25"	Desktop	7,000
1004567	2" x 0.25"	Industrial / High-Performance	14,000
1004524-1	2.5" x 0.25"	Desktop	7,000
1004524	2.5" x 0.25"	Industrial / High-Performance	14,000



BLANK



PRINTED



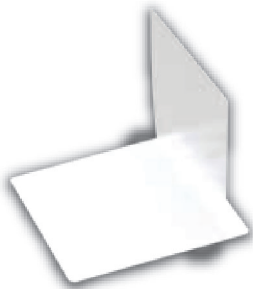
APPLIED

TS955 + TS526 SLIDE LABELS

For Glass Slides Exposed to Chemical Processing

- TS955 polyester slide labels—capable of holding up to direct immersion in xylene, DMSO, methanol, isopropyl alcohol, etc.
- TS526 polyester FLAP labels—the tab is adhered over the image to help protect it throughout the life of the slide. capable of withstanding staining in addition to common lab chemical exposures.

TS955 KIT P/N	LABEL SIZE	PRINTER TYPE	LABELS/ROLL
1004781-1	0.875" x 0.875"	Desktop	2,800
TS526 KIT P/N	LABEL SIZE	PRINTER TYPE	LABELS/ROLL
1020384 FLAP	0.875" x 0.875"	Industrial / High-Performance	500



BLANK



APPLIED



PRINTED

Our Top Printer Picks

1. **CAB MACH4S-DESKTOP**

With a small footprint, high resolution printing, simple and quiet operation the cab Mach4S Label Printer is the versatile answer to a host of labeling challenges.



2. **CAB SQUIX-INDUSTRIAL/HIGH PERFORMANCE**

Built to survive high demand environments, the SQUIX can handle large volume jobs, but still offers DPI high enough to tackle the most delicate and small barcode applications.



3. **ZEBRA ZD SERIES-DESKTOP**

The Zebra ZD printer series offers a comprehensive list of features to accommodate a broad range of needs. As a compact, clamshell model it's perfectly suited for desktop use and extremely user friendly.



4. **ZEBRA ZT SERIES-INDUSTRIAL/HIGH PERFORMANCE**

The ZT series barcode label printer includes a range of powerful printers capable of keeping up with some of the highest demand applications. Durable and high resolution thermal transfer print technology also ensures the readability of your barcodes no matter how small they are or what exposures they face.



5. **SATO CL4NX-INDUSTRIAL/HIGH PERFORMANCE**

The Sato CL4NX was designed with the future in mind—with HF RFID encoding capabilities and a durable design this printer will not only prepare you for the era of industry 4.0, but is built to last with a protective aluminum outer casing. An intuitive interface, improved re-load access and tool-less maintenance bring ease of use and downtime reduction to your facility.



TUBE & VIAL AUTOMATION

What Will Tube and Vial Label Automation Help Accomplish In My Practice?

- Increase throughput with high speed application and the ability to reallocate staff to more important duties
- Ensure accuracy by reducing the amount of human involvement and integrating your automation equipment directly into your software systems
- Reduce wasted time, effort and samples by ensuring the accuracy and precise placement of labels
- Integrate easily into your existing software systems and downstream automated processes



	CAB AXON 2	TUBEPRO	FLEX TUBEPRO
Print Technology	Thermal Transfer	Thermal Transfer	Thermal Transfer
Resolution	300 dpi or 600 dpi	600 dpi	600 dpi
Real Estate	Desktop	Desktop	Requires floor space
Acceptable Tube Size Range	105mm max length 10-17mm diameter	Nests can be customized to accommodate any size	Length: 12mm – 90mm Diameter: 6mm–15mm
Operator Involvement	Moderate-high	Moderate-high	Low
Processing Volume	Low	Low-Medium	High
Processing Speed	4+ seconds per tube/vial (varies based on speed of operator)	4+ seconds per tube/vial (varies based on speed of operator)	<3.5 seconds per tube/vial

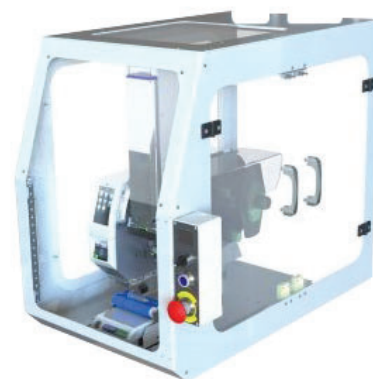
CAB AXON 2

The Axon 2 is a low throughput volume tube and vial label applicator offering reduced operator involvement when compared to manual labeling. The operator places the tube or vial in the applicator arms, taps the touchscreen icon and the labeled tube is either dropped into the tray or removed by hand. The Axon 2 was designed to include print and apply automation and can accommodate a range of tube and vial sizes.



TUBEPRO

The TubePro is a low to moderate throughput volume tube and vial label applicator offering reduced operator involvement when compared to manual labeling. The operator simply places the tube in the applicator nest and application is triggered as the light curtain senses the operator removing their hand from the system. Though the TubePro does feature print and apply automation, it can also accommodate pre-printed labels. Various tube and vial shapes and sizes can also be accommodated with specialized nests.



FLEX TUBEPRO

The Flex TubePro is a high throughput volume tube and vial label applicator. It's our fully automated option and requires minimal operator involvement. The tube and vial feeder system allows the operator to simply place up to 2,000 tubes or vials into the hopper, press a button and return to labeled tubes or vials within a couple hours. For further efficiency improvements, the Flex TubePro is capable of being integrated into an automatic placer system—or other robotic equipment—for a fully automated workflow. Though the Flex TubePro features print and apply automation, it can also accommodate pre-printed labels. Various tube and vial shapes and sizes can also be accommodated with specialized discs and nests.



MICROWELL PLATE LABEL AUTOMATION

Each of our automated microwell plate labeling solutions begins with a base model. Certain aspects of the base models can be altered to meet specific needs required for your practices—primarily aspects related to the way the labels are printed and software requirements. Listed below are the standard features of each of the base models we offer.

	SQUIX S3200	ECLIPSE 100	ECLIPSE 200	ECLIPSE 250
Plate Presentation Method	Manual	Manual	Manual	Manual
Automation Capable	Yes	Yes	Yes	Yes
Automated Plate Rotation	No	No	Yes	Yes
Automatic Height Adjustment	No	No	No	Yes
Accommodates Time Sensitive Information	Yes	Yes	Yes	Yes
Label Scan Verification	No	Optional	Optional	Optional

SQUIX S3200

- Precisely place labels for reduced waste and more efficient downstream processes
- Increase speed and productivity by minimizing operator effort
- Features the intuitive and familiar icon-based interface of the SQUIX
- Include important variable information in your labeling strategy with integrated print and apply automation
- Easily integrate with your existing systems



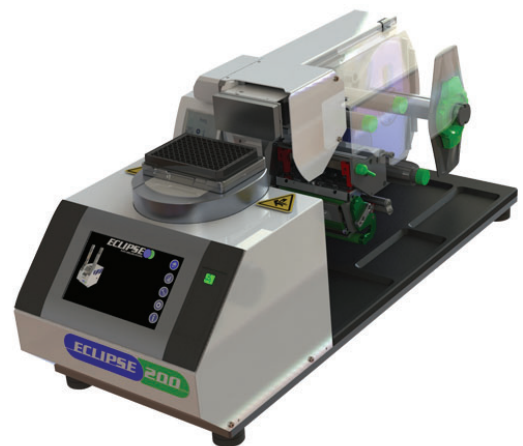
ECLIPSE 100

- Ensure precise placement of labels for reduced waste and more efficient downstream processes
- Increase speed and productivity by minimizing operator effort
- Include important variable information in your labeling strategy with integrated print and apply automation
- Verify barcode usability prior to application to reduce downtime and waste
- Integrate with your existing software systems



ECLIPSE 200

- Increase speed, productivity and accuracy by minimizing operator involvement
- Apply labels to multiple sides automatically
- Include important variable information in your labeling strategy with integrated print and apply automation
- Ensure precise placement of labels for reduced waste and more efficient downstream processes
- Verify barcode usability prior to application to reduce downtime and waste
- Integrate directly into existing software and automation systems or prepare for future integrations



ECLIPSE 250

- Increase speed, productivity and accuracy by minimizing operator involvement
- Apply labels accurately to multiple sides and plates of varying heights automatically
- Include important variable information in your labeling strategy with integrated print and apply automation
- Ensure precise placement of labels for reduced waste and more efficient downstream processes
- Verify barcode usability prior to application to reduce downtime and waste
- Integrate directly into existing software and automation systems or prepare for future integrations

RFID

RFID is an identification technology that allows for increased data storage and a less involved scanning process when compared to traditional barcodes. Introducing RFID to your laboratory labeling system can offer both increased efficiency and accuracy in several ways—here are five:



1. RFID tags can store more data than barcodes.
2. Hands free scanning is possible with RFID, allowing for increased processing speeds, tracking and automation compatibility
3. RFID aligns with the future. As the IoT grows, RFID is capable of interacting with more and more things, including smart refrigerators, smart shelves, and automated lab equipment.
4. Usage of consumables can be tracked using RFID allowing your items to communicate to your team when they are spent or expired.
5. Traditional barcodes can serve as a back-up if samples are in a situation where RFID tags become unreadable.

BARCODE SOFTWARE OPTIONS

Software is a necessary component in any barcode printing or automated labeling solution, but finding the right match can be difficult. Our team of software experts will help you choose the most suitable option to meet your needs from our range of options.

We offer ready to use packages from BarTender and NiceLabel—compatible with our printing and automation offerings, as well as most standard laboratory needs these packages are a no-brainer. To accommodate more specialized needs, we can also provide custom built software.

Not What You're Looking For?

NOT WHAT YOU'RE LOOKING FOR?

If your application doesn't require time sensitive information, you might be trying to move away from an in-house print strategy to make room for more value added equipment. If you're looking to remove printing from your facility we offer two additional labeling options:

PREPRINTED LABELS

Order your labels pre-printed to your specifications and gain access to a range of custom printing options.

As a label manufacturer, we have the supplies to offer durable and colorful print technologies in addition to protective coatings and laminates to ensure your branding and durability needs can be met.

Just like our blank labels, our pre-printed labels can be utilized in combination with automated application equipment and/or RFID for enhanced operation.

READY LABWARE SERVICES

If you're interested in eliminating application—and possibly more labware related tasks—from your facility, our Ready Labware Services program can help.

We have partnered with leading labware companies to bring you pre-marked labware. You can order labware with any of our standard label options pre-printed and pre-applied, or utilize one of our enhanced labeling technologies—including direct mark and ceramic labels.

Ready Labware Services can further assist in reducing labor within your facility when you take advantage of our tare weighing, sorting and custom kitting options.

Download our **READY Labware Services**
brochure for more details

DOWNLOAD BROCHURE



Ready to make a change in your labeling strategy?

Discuss your current processes and goals with one of our barcode labeling professionals today! We can help match you to the best marking solution for your practices.

Download our automated tube & vial labeling brochure for more details on our automated offerings.

[DOWNLOAD BROCHURE](#)

Click here to request a free consultation!

[FREE CONSULTATION](#)

ABOUT COMPUTYPE

Computype is a full solutions label supplier. For over 40 years, we have helped companies in diverse sectors increase efficiency and reduce labeling costs. Our solutions include customizable labeling software, equipment, system integration and support that help organizations work smarter and improve label quality.

For more information, visit
COMPUTYPE.COM

COMPUTYPE

2285 West County Road C
St. Paul, Minnesota 55113-2567
United States
Phone: 800-328-0852
www.computype.com



COMPUTYPE